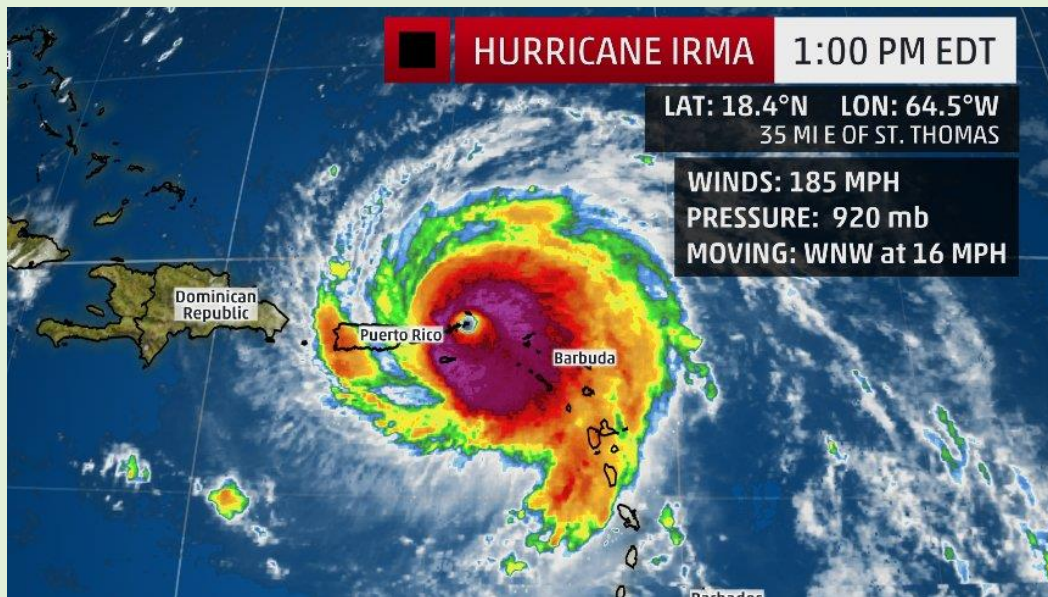


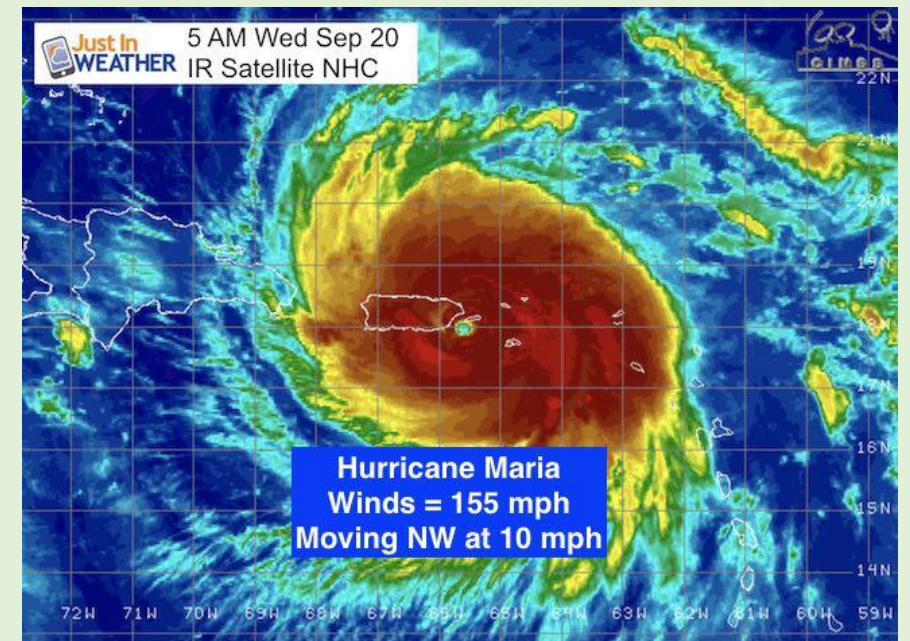
# Services for Displaced Population Affected by Hurricane Maria

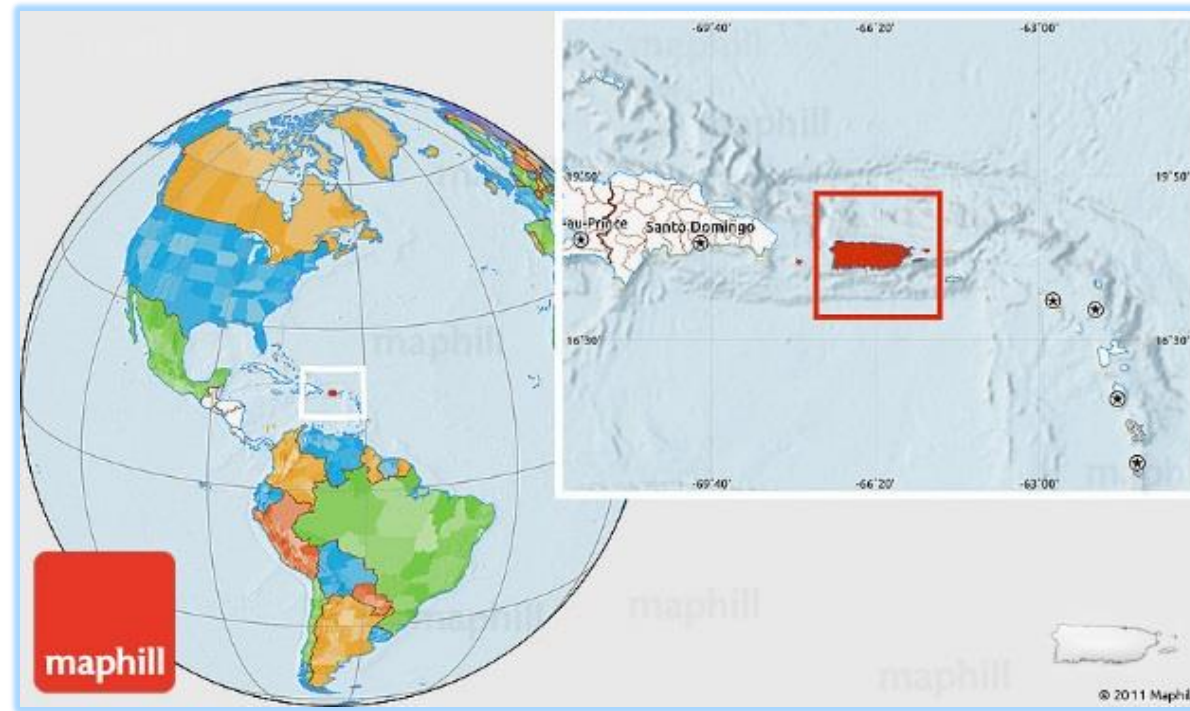
# A tale of two storms...and a small island

September 6, 2017



September 20, 2018





**Slightly less than three times the size of Rhode Island**

- **The island was claimed by the Spanish Crown in 1493 following Christopher Columbus' second voyage to the Americas.**
- **In 1898, Puerto Rico was ceded to the US as a result of the Spanish-American War.**
- **Puerto Ricans were granted US citizenship in 1917.**
- **In 1952, a constitution was enacted providing for internal self-government. The island became the Commonwealth of Puerto Rico.**
- **Economic recession on the island has led to a net population loss since about 2005, as large numbers of residents moved to the US mainland.**



- Hurricane María struck the island on September 20, 2018 causing catastrophic damage, including destruction of the electrical grid that had been crippled by Hurricane Irma just two weeks before.
- It was the worst storm to hit the island in eight decades, and damage is estimated in tens of billions of dollars.





# Before



# After



# Before

# After



**Last night – 9/19/17 (top)**



**Tonight – 9/20/17 (bottom)**







...and still more damage





**...and that's why many of them came here**



# **Why are they coming to Florida**

- **According to US Census figures approximately 3.5 million Puerto Ricans live in the island and over 5 million live in the continental US**
- **More than 1 million Puerto Ricans live in Florida**
- **Almost 300,000 live in Central Florida**
- **Other cities with large concentrations of Puerto Ricans are NY, Philadelphia and Chicago**
- **Many have returned to Puerto Rico, but it's hard to determine how many**



- **September 27 – Gov. Scott visited PR by request of PR governor and pleaded assistance to response and recovery efforts**
- **September 29 – Multi-Agency meeting at CFUW**
- **First week in October - Multi-Agency Resource Center (MARC) opened at the Orlando International Airport to provide assistance, information and referrals to individuals and families displaced by Hurricane Maria.**
- **Services ranged from medical through counseling services to lodging and housing.**

## Orlando Multi-Agency Resource Center

*Centro de ayuda para las familias  
desplazadas por el Huracán María*



**DATES/FECHAS** | Monday-Friday (Lunes a Viernes)

**TIME/HORAS** | 9 a.m.- 5 p.m.

**ADDRESS/DIRECCIÓN** | 6490 Hazeltine National Drive,  
(Suite 170) Orlando, FL 32822

**Transportation from Airport/Transportación del Aeropuerto:**

Terminal A-Level 1 | Departure/Salida 9 a.m./12:30 p.m./3:00  
p.m.

**For more information/Para más información:**

[www.floridadisaster.org/info/maria/](http://www.floridadisaster.org/info/maria/)



**FEMA**



- 26 federal state, county, city and non-profit agencies
- January 2<sup>nd</sup> - MARC was moved to Hazeltine National Drive near the airport

- **While responding to the aftermath of Hurricane Irma, Second Harvest of Central Florida joined the effort to provide services to the displaced families**
- **SHFB provided food boxes, water and SNAP application assistance, information and referrals**
- **As a US territory Puerto Rico receives SNAP funding**
- **Families relocating from Puerto Rico are eligible for SNAP**